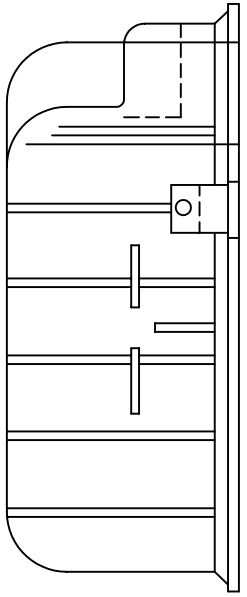


REVISIONS			
REV	DESCRIPTION	DATE	APPROVED
A	Original	22-May-04	

Notes:

1. This pool is manufactured in accordance with AS/NZS 1838 and is suitable for installation in soils of the following categories:  
Sand  
Sandy silt  
Slightly reactive clay
2. The active soil coefficient shall not exceed 0.33 and soil density shall not exceed 200kg/cum.
3. For installation in other conditions, refer to the Engineer.
4. This pool shall be installed in accordance with AS/NZS 1839.
5. Refer to Freedom Pools Drawing No. 1998-0022 for typical construction details.

End Elevation



Side Elevation

Freedom Pools			
1763 Albany Highway			
Kenwick W.A. 6107			
Freedom 2000			
5.04 x 2.85 x 1.22m			
SIZE	FSCM NO.	DWG NO.	REV
A		2004-0010	A
SCALE	NTS		SHEET 1 of 1