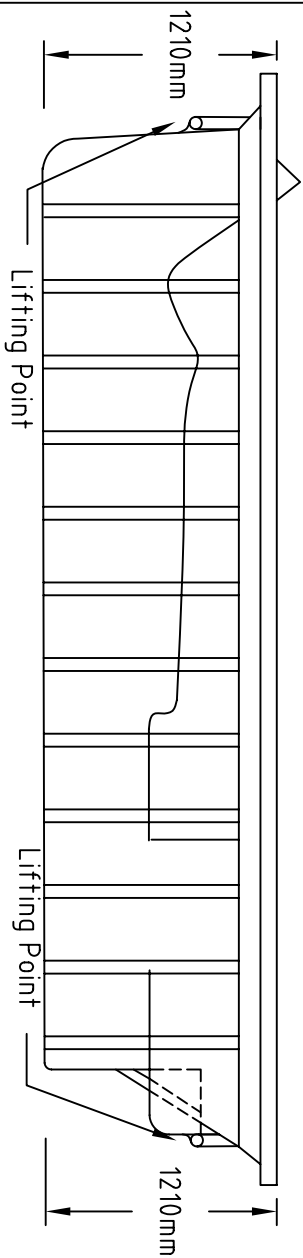
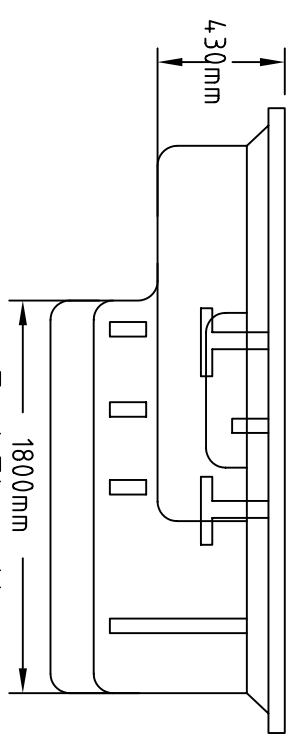


Plan



Side Elevation



End Elevation

REVISIONS			
REV	DESCRIPTION	DATE	APPROVED
A	Original	5-Nov-98	

Notes:

1. This pool is manufactured in accordance with AS/NZS 1838 and is suitable for installation in soils of the following categories:
Sand
Sandy silt
Slightly reactive clay
2. The active soil coefficient shall not exceed 0.33 and soil density shall not exceed 200kg/cum.
3. For installation in other conditions, refer to the Engineer.
4. This pool shall be installed in accordance with AS/NZS 1839.
5. Refer to Freedom Pools Drawing No. 1998-0022 for typical construction details.

Freedom Pools
1763 Albany Highway Kenwick WA 6107

San Remo
5.0 x 2.4 x 1.21m

SIZE	FSCM NO.	DWG NO.	REV
A		2004-0006	A
SCALE	NTS		SHEET 1 of 1